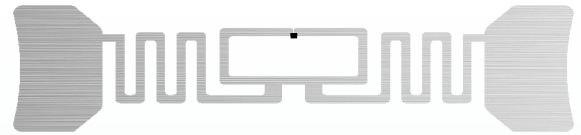


Invengo xWing Paperface Inlay XC-TF8029-C13+FPI

Industry Leading Performance,
Optimized for Item Level Tagging
Features Monza 5 Chip



Overview

With unique features that facilitate the reading of difficult to reach tags and fast authentication, and excellent stacking performance, the Invengo xWing Paperface Inlay is ideal for item-level tagging of apparel, electronics, cosmetics, and jewelry, or any other application that requires high-volume, high-performance, serial-numbered inlays.

The xWing is an omni-directional paperface inlay delivered in roll format with wide edge leading for easy converting and wide range of finishing formats. Its design is compatible with RFID Printers.

Superior read sensitivity of up to -18 dBm, combined with excellent interference rejection, delivers exceptional read reliability. Industry leading write sensitivity of up to -16 dBm for unparalleled bulk encoding.

The xWing offers up to 128 bits of memory for encoding an Electronic Product Code (EPC), and 48 bits of serialized Tag Identifier (TID) memory for authentication and anti-cloning applications.

In addition, the Inlay's embedded nonvolatile memory (NVM) provides 100,000 cycle endurance / 50-year data retention.

The delivery format of the XC-TF8029-C13+FPI is paperface inlay.

Prior to delivery, 100% of the Invengo xWing Paperface Inlays undergo complete testing, ensuring the high quality that customers expect from Invengo.

Features

- ✓ **EPCglobal UHF Class 1 Gen 2 / ISO 18000-6C compliant**
- ✓ **Operating frequency 860-960MHz**
- ✓ **Monza 5 chip**
- ✓ **Superior read sensitivity**
- ✓ **Industry leading write sensitivity**
- ✓ **Up to 128 bits of EPC**
- ✓ **48 bits of serialized TID**
- ✓ **FastID™ mode & TagFocus™ mode**
- ✓ **NVM with 100,000-cycle/50-year retention**
- ✓ **Extended temperature range**
- ✓ **Delivery format: paperface inlay, compatible with RFID printers**

Applications

Retail

Logistics

Warehouse Management

Specifications

Invengo xWing Paperface Inlay
XC-TF8029-C13+FPI

Physical Characteristics

Dimensions

70×19×0.28mm (2.6×0.7× 0.01in)

Base material

PET & Aluminum

Casing material

Glassine paper & coated paper

Weight

1.56 kg±0.05kg/roll; 7.43 kg±0.2 kg/carton
(3.44±0.11lbs/roll; 16.38±0.44lbs/carton);

Quantity

Up to 4 rolls/carton, 4,000 inlays/roll;

User Environment

Operating temperature

-40°C to +85°C (-40°F to +185°F)

Storage temperature

-20°C to +50°C (-4°F to +122°F)

Humidity

≤80%

Performance Specifications

Operating frequency

860–960MHz

Supported standard

EPCglobal Class 1 Gen 2; ISO 18000-6C

Read distance

Up to 7m / 23ft (configuration dependent)

Write Distance

Up to 4m / 13ft (configuration dependent)

Chip type

Monza™ 5

Memory

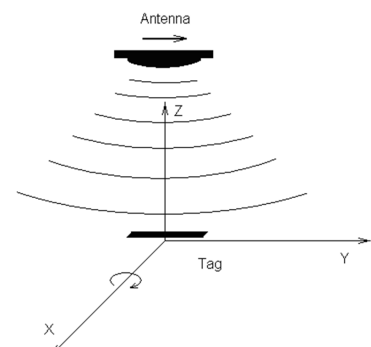
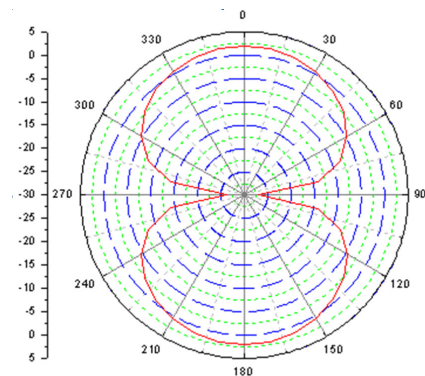
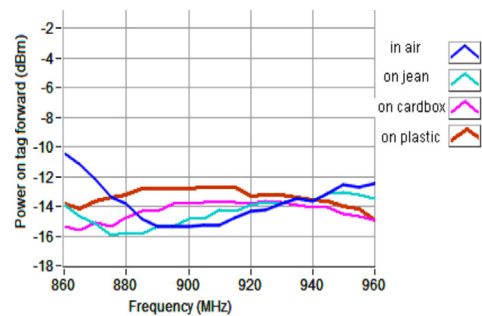
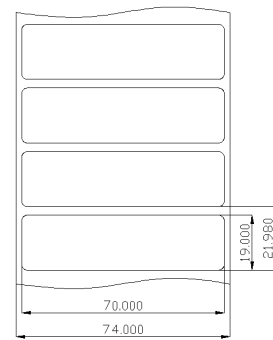
Up to 128 bits of EPC memory; 48 bits of
serialized TID memory

Data retention

50 years

EEPROM write endurance

100,000 cycles



Contact us

Corporate Headquarters

3/F, Bldg.T2-B, High-tech Park South,
Shenzhen, Guangdong 518057 China
Tel: (86) 755 26525585
Fax: (86) 755 26525277
intl@invengo.cn

Invengo Technology Corp. (USA)

12801 Worldgate Drive, Suite 500
Herndon, VA 20170, USA
Tel: (1) 703 793 0085
Fax: (1) 703 871 3901
sales@invengo.com